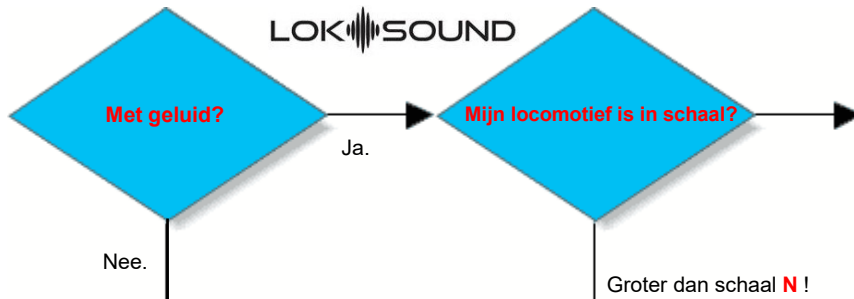


ESU. Decoder wizard: welke decoder wenst U?

Français au verso



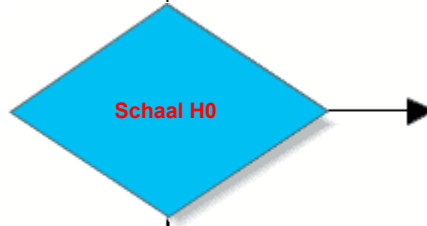
Adapters voor LokSound micro:
 ESU-51993: Next18 => losse kabels
 ESU-51994: Next18 => NEM-651 (6 p.)
 ESU-51995: Next18 => NEM-652 (8 p.)
 ESU-51996: Next18 => PluX16



N. Kies voor LokSound micro V5.0

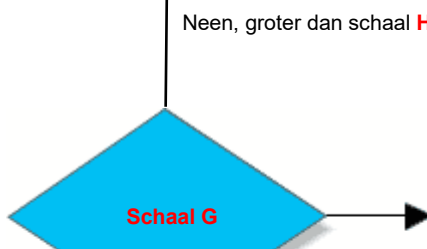
Altijd mfx© / M4

- ESU-58816 => 6-pin (NEM-651)
- ESU-58810 => 8-pin (NEM-652)
- ESU-58814 => PluX16 (NEM-658)
- ESU-58818 => Next18 (NEM-662)
- ESU-58813 => kabel zonder stekker



Altijd mfx© / M4

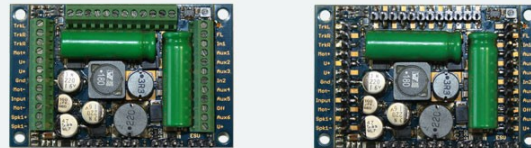
- ESU-58410 => 8-pin (NEM-652)
- ESU-58419 => 21MTC (NEM-660)
- ESU-58412 => PluX22 (NEM-658)
- ESU-58416 => 6-pin (NEM-651)
- ESU-58449 => 21MTC Märklin/Trix !



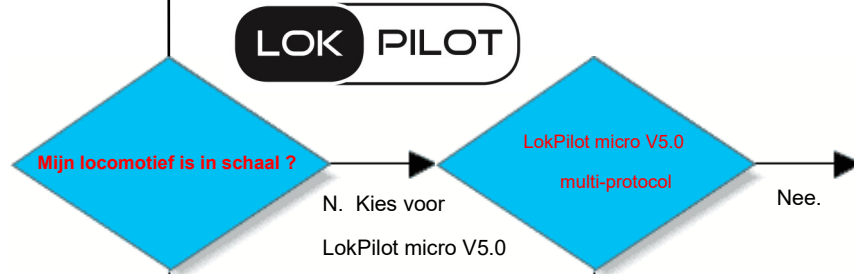
LOK SOUND
EST. 1999

ESU-58315 => pin-aansluitingen, geleverd met adapter 51959

Neen, groter dan schaal G!
Kies voor LokSound XL V5.0



- ESU-58513 => schroefaansluitingen
- ESU-58515 => pin-aansluitingen (Stiftleisten)
- ESU-51971: adapter voor decoder 58515 (optie)



Nee.

- ESU-59826 => 6-pin (NEM-651): met kabel en stekker.
- ESU-59827 => 6-pin (NEM-651): met stekker direct verbonden.
- ESU-59828 => Next18 (NEM-662)

- LokPilot Micro V4.0 wordt V5.0**
- ESU-54684 => ESU-59826
 - ESU-54685 => ESU-59827
 - ESU-54686 => ESU-59828

Ja.

- ESU-59810 => 8-pin (NEM-652): met kabel en stekker.
- ESU-59816 => 6-pin (NEM-651): met kabel en stekker.
- ESU-59817 => 6-pin (NEM-651): met stekker direct verbonden.
- ESU-59818 => Next18 (NEM-662)

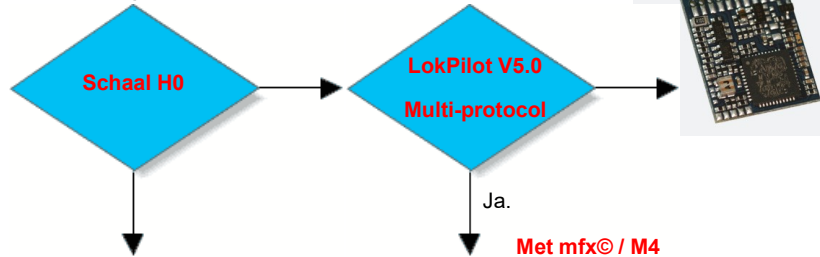
- LokPilot Micro V4.0 wordt V5.0**
- ESU-54683 => ESU-59810
 - ESU-54687 => ESU-59816
 - ESU-54688 => ESU-59817
 - ESU-54689 => ESU-59818

Indien LokPilot Micro nog te groot is, kies dan onze LokPilot DCC NANO-decoders:

Nee. Alleen DCC.

- ESU-59837 => 6-pin (NEM-651): met stekker direct verbonden: in hoek.

- ESU-53661 => 8-pin (NEM-652): met kabel en stekker.
- ESU-53664 => 6-pin (NEM-651): met kabel en stekker.
- ESU-53665 => 6-pin (NEM-651): met stekker direct verbonden.



- ESU-59620 => 8-pin (NEM-652)
- ESU-59626 => 6-pin (NEM-651)
- ESU-59629 => 21MTC (NEM-660)
- ESU-59622 => PluX22 (NEM-658)

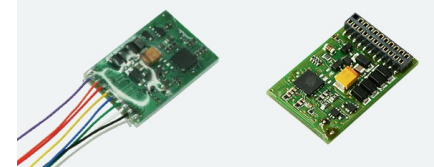
- LokPilot V4.0 wordt LokPilot V5.0**
- ESU-54611 => ESU-59620
 - ESU-54613 => ESU-59626
 - ESU-54615 => ESU-59629
 - ESU-54617 => ESU-59622

LokPilot Standard (DCC)

Dit basissgamma

bevat 3 DCC-decoders:

- ESU-53611 => 8-pin (NEM-652)
- ESU-53614 => 21MTC (NEM-660)
- ESU-53616 => PluX22 (NEM-658)



ESU-59315=> met pin-aansluitingen.

Quad protocol, met Powerpack.

LokPilot V4.0 wordt LokPilot V5.0

ESU-54640 => ESU-59315

- ESU-59610=> 8-pin (NEM-652)
- ESU-59616 => 6-pin (NEM-651)
- ESU-59619 => 21MTC (NEM-660)
- ESU-59612 => PluX22 (NEM-658)

ESU-59649 => 21MTC MKL Märklin/Trix !

LokPilot V4.0 wordt LokPilot V5.0

- ESU-54610 => ESU-59610
- ESU-54612 => ESU-59616
- ESU-54614 => ESU-59619
- ESU-54616 => ESU-59612

- ESU-64610 => ESU-59610
- ESU-64613 => ESU-59616
- ESU-64614 => ESU-59619
- ESU-64616 => ESU-59612
- ESU-64617 => ESU-59612

ESU-64618 => ESU-59649 MKL: Märklin/Trix